



water, sewage and sludge technology

pumps for life ...

An ISO 9001:2008 certified company by 

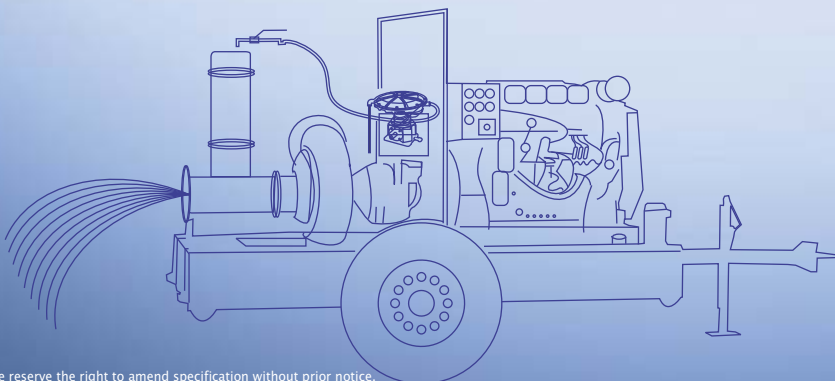
Instruction Manual

BOREHOLE MOTORS 4" & 6"



6 Inches

4 Inches

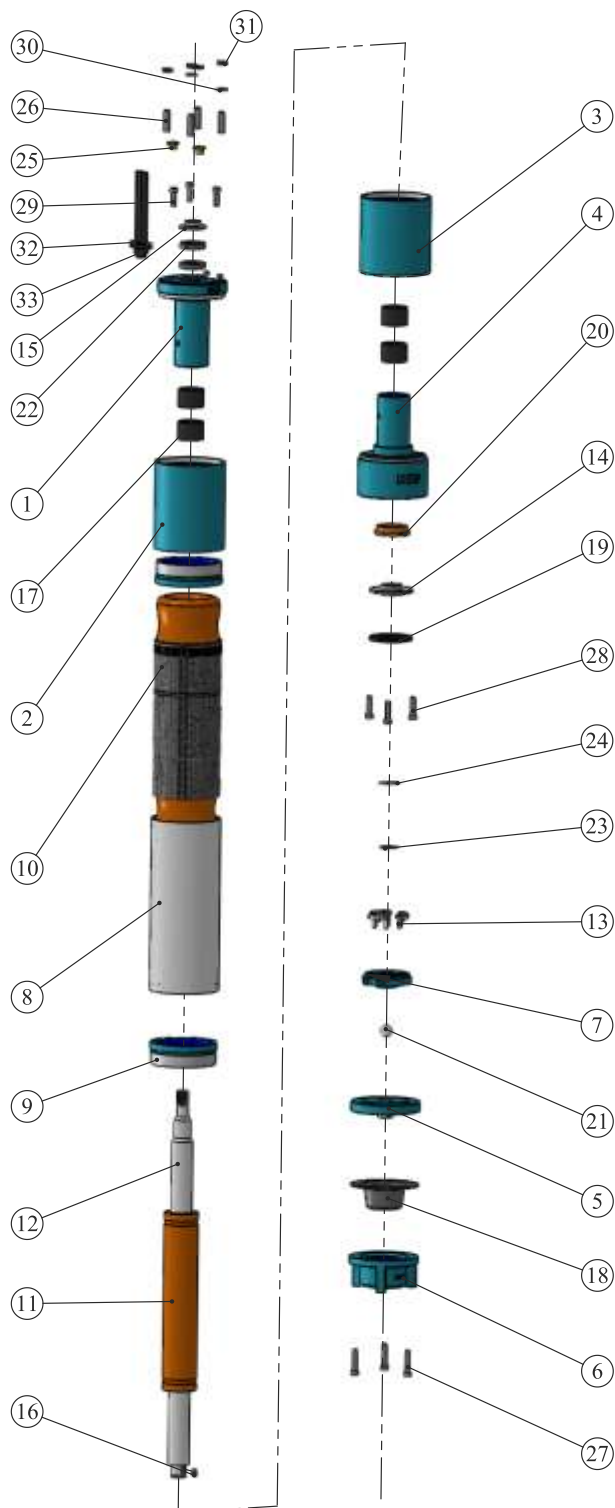


* We reserve the right to amend specification without prior notice.

INDRA HYDRO TECH PUMPS PVT. LTD.

316, 1st Floor, 8th Cross, 4th Phase, Peenya Industrial Area, Bengaluru - 560 058, Karnataka, India
Tel.: +91 80 2836 2916, Fax: +91 80 2836 3048, Email: contact@ihpindia.in, www.ihpindia.in

BOREHOLE MOTORS 4" & 6"



ITEM NO	DESCRIPTION	QTY
1	UPPER BEARING HOUSE	1
2	TOP COVER V4	1
3	BOTTOM COVER	1
4	LOWER BEARING HOUSE	1
5	INTERMEDIATE	1
6	LEG BRACKET	1
7	BEARING SET 3	1
8	CYLINDER V4	1
9	CYLINDER THREAD	2
10	STATOR	1
11	ROTOR V4	1
12	SHAFT V4	1
13	BEARING SET 4	3
14	BEARING SET 1	1
15	SHAFT GLAND v4	1
16	KEY V4	2
17	CERAMIC PART	4
18	LEG BRACKET BUSH	1
19	BEARING SET 2	1
20	LOWER BEARING BUSH	3
21	BEARING SET BALL	2
22	OIL SEAL V4	4
23	RETAINER RING V4	1
24	SHIM V4	3
25	BRASS BOLT M10X6	1
26	STUD M8X35	1
27	ALLEN SCREW M6X30	1
28	ALLEN SCREW M6X25	3
29	ALLEN SCREW M6x20	1
30	M8 WASHER	4
31	M8 NUT	4
32	CABLE WASHER	1
33	CABLE GLAND	1

DO NOT SCALE DRAWING

REVISION

1

* We reserve the right to amend specification without prior notice.

INDRA HYDRO TECH PUMPS PVT. LTD.

316, 1st Floor, 8th Cross, 4th Phase, Peenya Industrial Area, Bengaluru - 560 058, Karnataka, India
Tel.: +91 80 2836 2916, Fax: +91 80 2836 3048, Email: contact@ihpindia.in, www.ihpindia.in

INSTALLATION AND OPERATING INSTRUCTIONS

- The borewell should fully be developed and flushed free of cutting and sand.
- Determine the maximum depth of well and the draw down level at max pump capacity. Pump setting depth should be atleast one meter below the max draw down level.
- Ensure a minimum velocity of 0.2 m/s part of the motor for proper cooling.
- The motor should be filled with pure drinking water free of any silt or suspended particles. Replace the water filling drain plugs without fail.
- The electrical connections should be carried out by a qualified electrician.
- Earthing should be provided with the motor body.
- Ensure correct size of cable and suitable electrical protection devices like MCB, cut-off relay, contactors, etc. are provided.
- Relay should be set for full load current mentioned and single phasing, dry run protection should be used to avoid coil burning on account of dry running and single phasing.
- Check for free rotation of pump and motor before coupling.
- Check for vertical play before and after coupling.
- Ensure that only recommended size of piping is used and the pump should be gripped by two flats of pipe wrench.
- The threaded joints of pipe must be well cut and fit together tightly to ensure they do not work loosely.
- Ensure the motor cable is not damaged when pump is lowered into the well.
- Ensure the pump is completely submerged in the liquid before starting.
- Ensure the pump is not stopped till the water becomes clearer, free of impurities, otherwise pump parts and check valve gets clogged. Operate pumpset for atleast five minutes daily to avoid pump jamming.
- Ensure no oversize backup fuse wires are used. This will damage the motor winding in case of short circuiting.
- Ensure the valve is throttled to avoid dry running in case of low discharge. Do not test the pumpset outside bore in dry conditions as this damages seals and bearings.
- Do not use pump to handle water containing solid/fibrous substances.

Consumer Warranty

Indra Hydro Tech Pumps (P)Ltd warrants that, when this product is used for the purpose it was designed, is correctly housed and protected from weather, vermin and dust etc, that it will be free from material and manufacturing defects at the time of the original purchase.

Our products comes with guarantee that cannot be excluded under Indian Consumer Laws . You are entitled to a replacement or refund for major failure and for compensation for any other reasonably foreseeable loss or damage. You are also entitled to have products repaired or replaced if goods fail to be of acceptable quality and failure doesn't amount to major failure

How to claim warranty

Before doing so, study the instruction booklet provided with the product, and ensure it has been correctly installed. Remember, we as manufacturer has built thousands of identical units , they have been extensively tested and in field use for many years. Failure of this products to work correctly, 99% of the time relates to installation, operating or application faults. In the event of a possible warranty problems, contact nearest distributor or manufacturer

Indra Hydro Tech Pumps (P) Ltd
316, 4th Phase, 8th Cross
Peenya Industrial Area
Bangalore - 560 058
Karnataka State
INDIA

Phone: +91 80 28362916 **Fax:** +91 80 28363048.

Email: service@ihpindia.in and contact@ihpindia.in

To assist the distributor or Indra Hydro Tech Pumps (P) Ltd to address your request for warranty, could you please provide:

- Product
- The product must be delivery to IHP's authorized distributor or dealer or Indra Hydro Tech Pumps Pvt Ltd (as per above address) inspection / repairs
- Proof of date of original purchase must be supplied
- The serial number of the product if any
- Full contact details including name, full address and telephone or mobile number or SKYPE IDs.



water, sewage and sludge technology

pumps for life ...

An ISO 9001:2008 certified company by 



INDRA HYDRO TECH PUMPS PVT. LTD.

316, 1st Floor, 8th Cross, 4th Phase
Peenya Industrial Area
Bengaluru - 560 058
Karnataka, India
Tel.: +91 80 2836 2916
Fax: +91 80 2836 3048
Email: contact@ihpindia.in



www.ihpindia.in